

LOCATION MAP (NTS)  
Green Park Extension  
28°33'38.95"N 77°12'15.04"E

NOTE:  
NOT PART OF THE SCOPE OF WORK:  
- GULMOHAR ENCLAVE

- RESIDENTIAL
- COMMERCIAL
- MIXED (COMM. + RESI.)
- PUBLIC SEMI-PUBLIC
- TRANSPORTATION
- GREEN AREA
- VACANT PLOTS
- VILLAGE

- LEGEND
- TREE
  - CAR PARKING BAY
  - ANGULAR CAR PARKING BAY
  - PARALLEL CAR PARKING
  - 3 WHEELER PARKING
  - PARKING FOR HANDICAPPED USERS
  - NO PARKING
  - STREET LIGHTS
  - GREEN AREA
  - BUILDING
  - LAUNDRY
  - COLONY GATE KEPT OPEN
  - COLONY GATE KEPT CLOSED

**PARKING MANAGEMENT AREA PLAN**  
**GREEN PARK EXTN.**

**LANDUSE**

ALL DIMENSIONS IN: SHEET **1/3**  
N.A.  
SCALE: 1 : 1200 (SHEET A1)

SOUTH ZONE:

SUPERINTENDING ENGINEER: EXECUTIVE ENGINEER  
ASSISTANT ENGINEER: JUNIOR ENGINEER

R.P. CELL:

TRANSPORT CONSULTANT: A.C. RP CELL  
A.O. RP CELL: AREA INSPECTOR: JR. ENGINEER

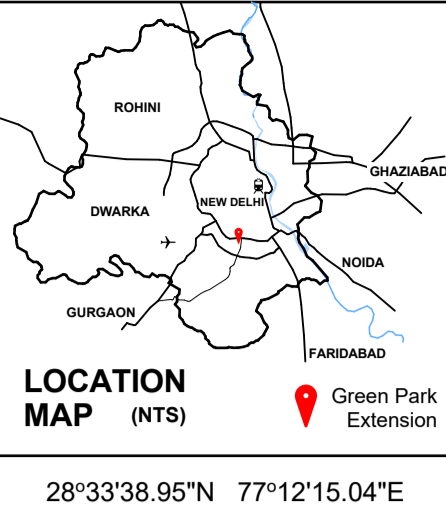
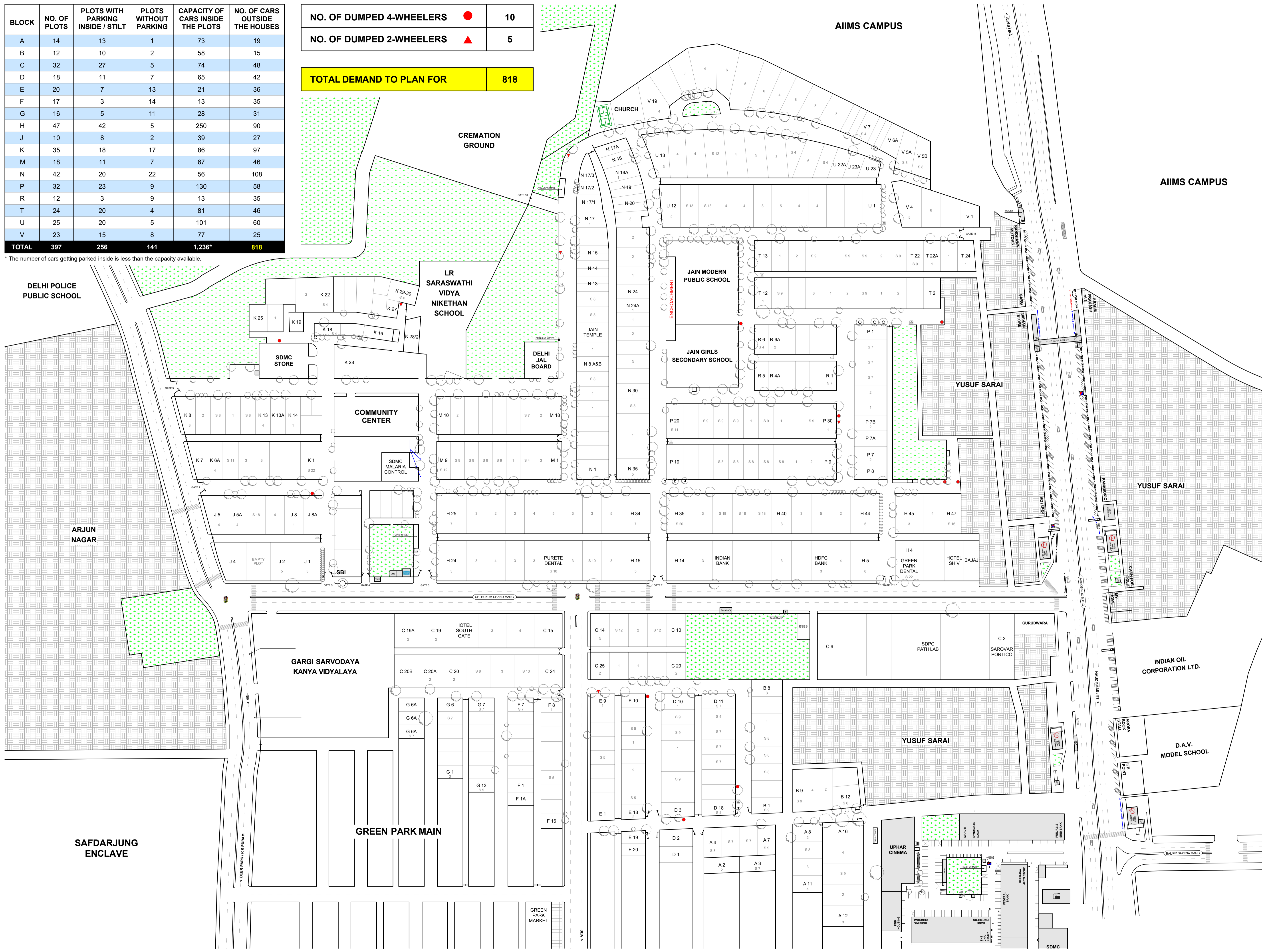
DATE: 3rd June 2021  
SOUTH DELHI MUNICIPAL CORPORATION

BLOCK	NO. OF PLOTS	PLOTS WITH PARKING INSIDE / STILT	PLOTS WITHOUT PARKING	CAPACITY OF CARS INSIDE THE PLOTS	NO. OF CARS OUTSIDE THE HOUSES
A	14	13	1	73	19
B	12	10	2	58	15
C	32	27	5	74	48
D	18	11	7	65	42
E	20	7	13	21	36
F	17	3	14	13	35
G	16	5	11	28	31
H	47	42	5	250	90
J	10	8	2	39	27
K	35	18	17	86	97
M	18	11	7	67	46
N	42	20	22	56	108
P	32	23	9	130	58
R	12	3	9	13	35
T	24	20	4	81	46
U	25	20	5	101	60
V	23	15	8	77	25
<b>TOTAL</b>	<b>397</b>	<b>256</b>	<b>141</b>	<b>1,236*</b>	<b>818</b>

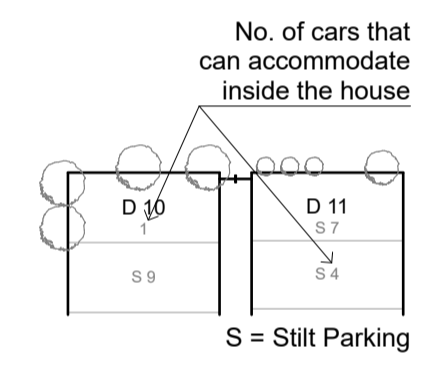
NO. OF DUMPED 4-WHEELERS	●	10
NO. OF DUMPED 2-WHEELERS	▲	5

<b>TOTAL DEMAND TO PLAN FOR</b>	<b>818</b>
---------------------------------	------------

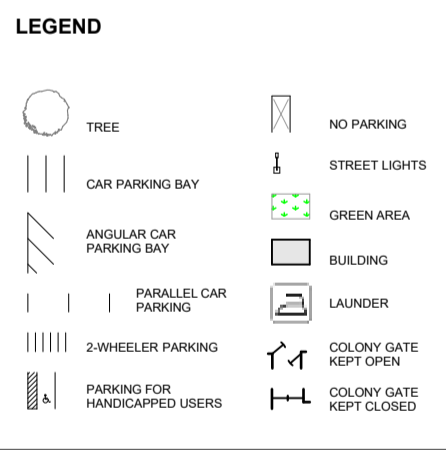
\* The number of cars getting parked inside is less than the capacity available.



**NOTE:**  
 PARKING DEMAND CALCULATION SURVEY DONE BETWEEN 06:00 AND 07:30.  
 SOME OF THE RESIDENTS MIGHT HAVE BEEN OUT OF STATION IN THEIR PRIVATE VEHICLES AT THE TIME OF THE SURVEY.  
 ALSO THERE COULD BE SOME GUESTS / VISITORS IN THE AREA TOO.



● DUMPED 4-WHEELER  
 ▲ DUMPED 2-WHEELER



**PARKING MANAGEMENT AREA PLAN**  
**GREEN PARK EXTN.**

**PARKING DEMAND**

ALL DIMENSIONS IN: SHEET 2/3  
 N.A.  
 SCALE: 1 : 1200 (SHEET A1)  
 SOUTH ZONE:

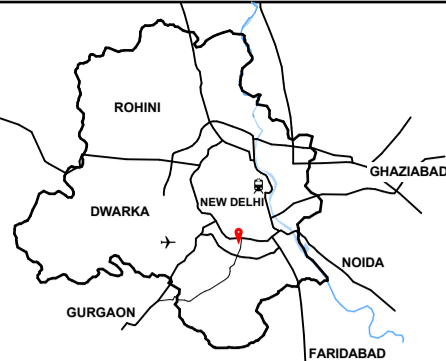
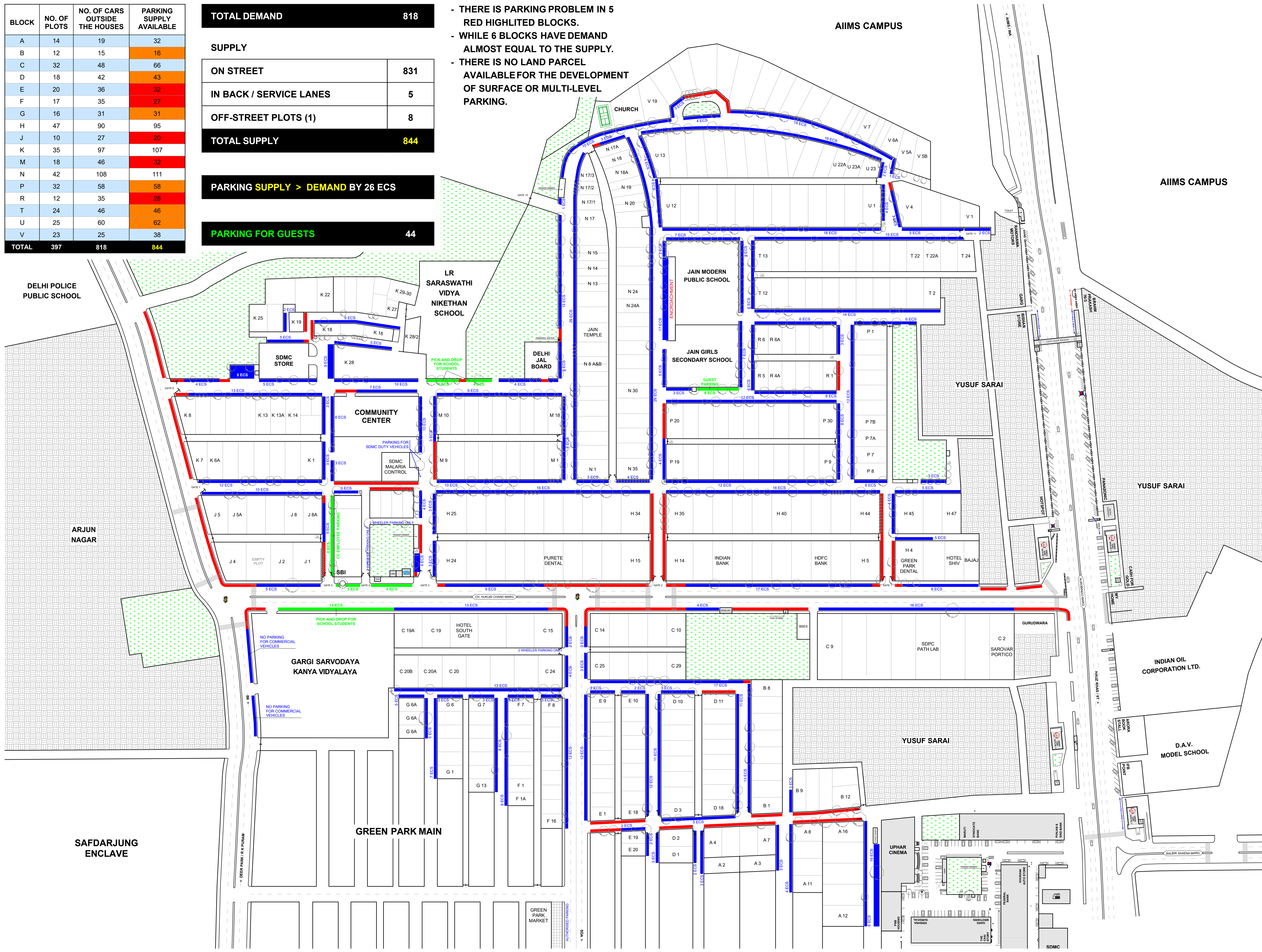
SUPERINTENDING ENGINEER	EXECUTIVE ENGINEER
ASSISTANT ENGINEER	JUNIOR ENGINEER
R.P. CELL:	
TRANSPORT CONSULTANT	A.C. RP CELL
A.O. RP CELL	AREA INSPECTOR
	JR. ENGINEER
DATE:	3rd June 2021



BLOCK	NO. OF PLOTS	NO. OF CARS OUTSIDE THE HOUSES	PARKING SUPPLY AVAILABLE
A	14	19	32
B	12	15	16
C	32	48	66
D	18	42	43
E	20	36	32
F	17	35	27
G	16	31	31
H	47	90	95
J	10	27	20
K	35	97	107
M	18	46	32
N	42	108	111
P	32	58	58
R	12	35	28
T	24	46	46
U	25	60	62
V	23	25	38
<b>TOTAL</b>	<b>397</b>	<b>818</b>	<b>844</b>

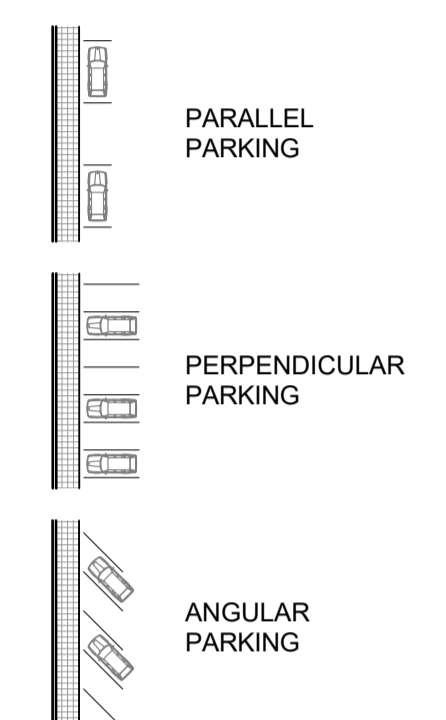
<b>TOTAL DEMAND</b>	<b>818</b>
<b>SUPPLY</b>	
<b>ON STREET</b>	<b>831</b>
<b>IN BACK / SERVICE LANES</b>	<b>5</b>
<b>OFF-STREET PLOTS (1)</b>	<b>8</b>
<b>TOTAL SUPPLY</b>	<b>844</b>
<b>PARKING SUPPLY &gt; DEMAND BY 26 ECS</b>	
<b>PARKING FOR GUESTS</b>	<b>44</b>

- THERE IS PARKING PROBLEM IN 5 RED HIGHLIGHTED BLOCKS.
- WHILE 6 BLOCKS HAVE DEMAND ALMOST EQUAL TO THE SUPPLY.
- THERE IS NO LAND PARCEL AVAILABLE FOR THE DEVELOPMENT OF SURFACE OR MULTI-LEVEL PARKING.



LOCATION MAP (NTS)  
Green Park Extension  
28°33'38.95"N 77°12'15.04"E

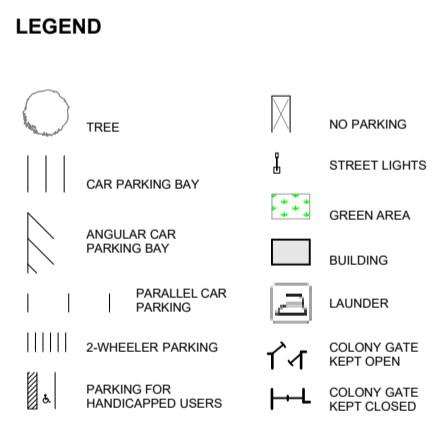
**NOTE:**  
NO PARKING IN FRONT OF THE MAIN ENTRY / EXIT GATES OF THE PLOTS OR PREMISES.  
NO PARKING ON THE ISLANDS AND FOOTPATHS.



RWA WILL ISSUE STICKERS TO THE RESIDENTS OF GREEN PARK EXTENSION.

CARS OF THE RESIDENTS OF YUSUF SARAI VILLAGE AND ARJUN NAGAR VILLAGE ARE NOT ALLOWED TO PARK INSIDE THE COLONY OF GREEN PARK EXTENSION.

- PARALLEL PARKING
- PERPENDICULAR PARKING
- NO PARKING ZONE
- HALT & GO / PICK & DROP



**PARKING MANAGEMENT AREA PLAN**  
**GREEN PARK EXTN.**

**PARKING SUPPLY**

ALL DIMENSIONS IN: SHEET **3/3**  
N.A.  
SCALE: 1 : 1200 (SHEET A1)

SOUTH ZONE:  
SUPERINTENDING ENGINEER EXECUTIVE ENGINEER  
ASSISTANT ENGINEER JUNIOR ENGINEER  
R.P. CELL:  
TRANSPORT CONSULTANT A.C. RP CELL  
A.O. RP CELL AREA INSPECTOR JR. ENGINEER