



MUNICIPAL CORPORATION OF DELHI
OFFICE OF EXECUTIVE ENGINEER (WtE) DEMS
Room No.1901, 19th Floor, Dr. SPM, Civic Centre
JLN Marg, New Delhi- 110002
email: eedems-hq@mcd.nic.in
Phone: 011-23226949



No.: EE/WtE/MCD/DEMS/2022-23/D-20

Date: 28.09.2022

CORRIGENDUM NO. 8

Subject: Setting up of Municipal Solid Waste (MSW) to Energy Facility at Narela-Bawana, Delhi
NIT No.: EE/SLF/B/TC/2022-23/01 dated 15.07.2022

With respect to the reply of pre-bid queries of above-mentioned work, the bidders are requested to note the following changes:

Reply to pre-bid query given at S.No. 29 w.r.t. shifting of HT Power Lines is to be read as under:

The Authority has decided to pursue for merger/ shifting of one transmission line of DTL and one transmission line of PowerGrid on multi- circuit tower. Necessary coordination, in this regard, has been initiated with the DTL & PowerGrid. Depending upon the feasibility & location of the shifting, minimum 15 acres of land would be handed over to the concessionaire for this project.

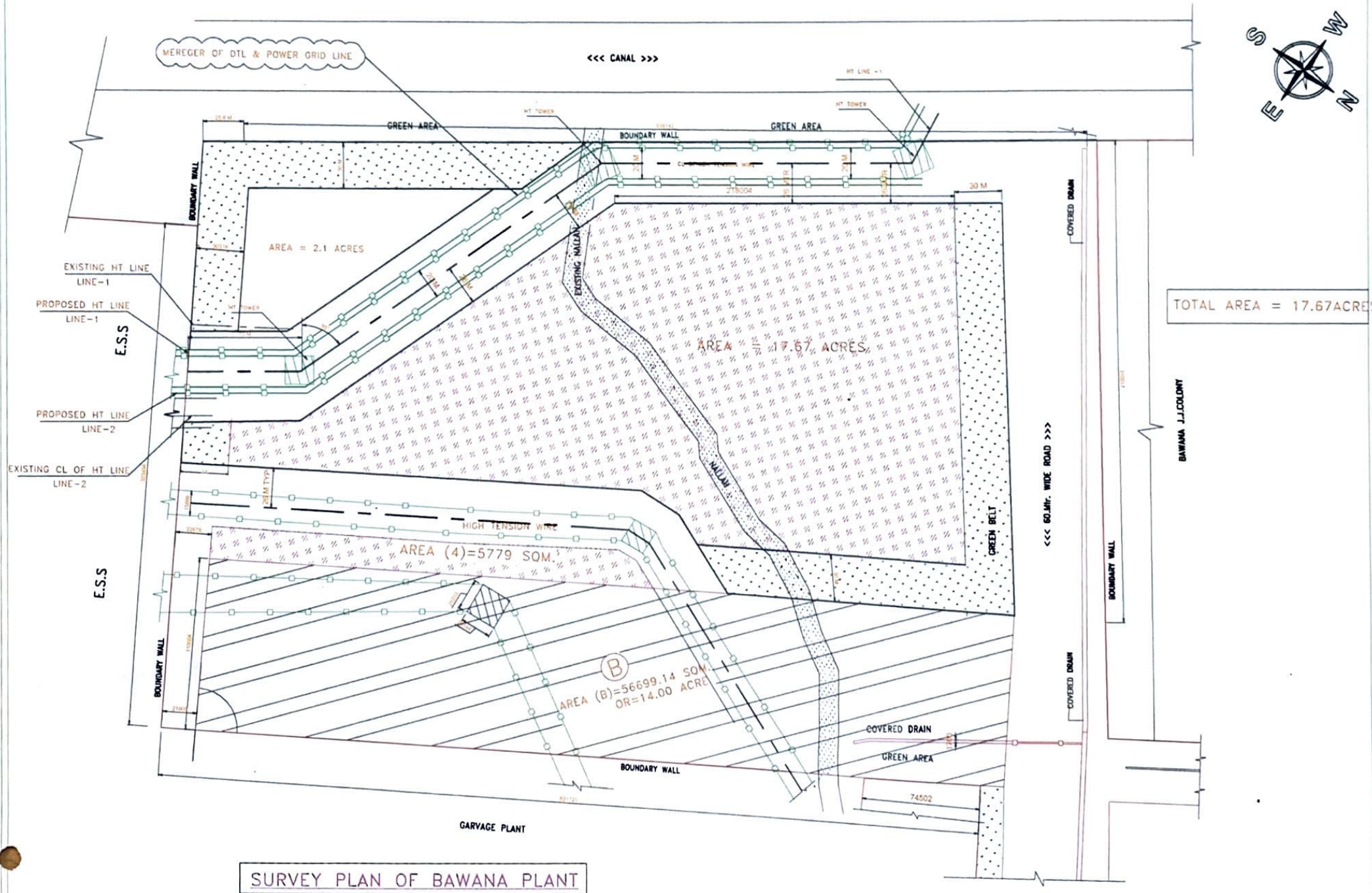
Please refer to proposed merger/ shifting of transmission lines as shown in **Annexure-II.**

Encl.: Annexure-II

Distribution:

1. Director (IT) with request to upload on web site.
2. AAO(SLF)Bhalswa


28/09/2022
EE(WtE) DEMS



TOTAL AREA = 17.67 ACRES

SURVEY PLAN OF BAWANA PLANT